

Value leadership  
redefined.

Class-leading accuracy  
and repeatability.

Operational simplicity.



# MPM

## MPM 125™ Stencil Printer

Affordable Performance

# MPM

## MPM 125

### Reliability, Capability, Flexibility and Simplicity

The perfect union of reliability, capability, flexibility and simplicity, MPM 125 surpasses all the competition in its price/performance class.

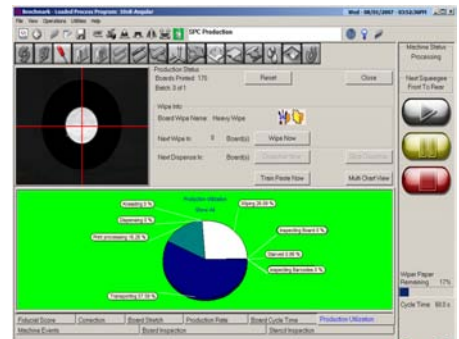
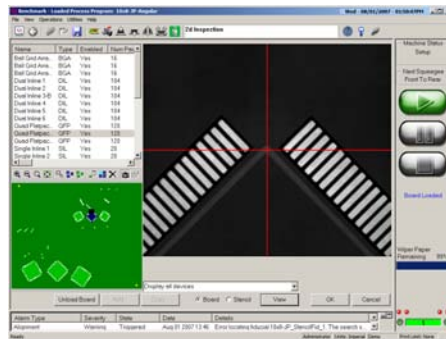
### Accurate, Repeatable Performance

The MPM 125 printer features accuracy and repeatability normally associated with the most expensive high-end equipment. This unique system proves that performance doesn't have to be sacrificed in a cost-effective system. The 125's  $\pm 12.5$  micron at 6 sigma accuracy is the result of a precision engineered and integrated system. CANopen motion control architecture (originally developed for the award-winning Accela printer platform) yields exceptional performance in signal communication and high speed motion control while reducing design complexity. The state-of-the-art digital camera, which includes telecentric lenses, advanced optics and lighting techniques, results in unmatched vision performance in both alignment and post-print inspection. Patented designs utilized in the transport and squeegee systems maximize reliability and uptime; and that reduces your cost of ownership.



### Advanced Inspection and SPC Tools

The MPM 125 incorporates expanded 2D inspection capabilities, featuring both MPM's patented contrast and texture-based technologies with BridgeVision® and StencilVision™. Pad-level details can be viewed on-screen and device-level results are stored on a per-board basis as part of the powerful SPC program tools. These tools provide line utilization and detailed process information and, when combined with the expanded inspection capabilities, the fastest quantitative post-print, device-level data gathering in the industry.



### Easy to Learn, Easy to Use

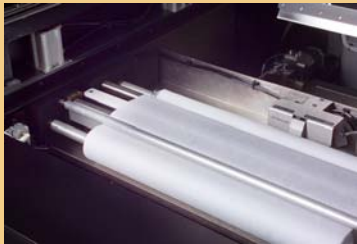
Low cost of ownership can only be achieved when great performance is augmented by ease of use. MPM 125 is designed with your operators in mind, so it's easy to learn and even easier to use. Speedline's Benchmark™ software provides a convenient graphical user interface within the familiar Windows® operating system. Built-in wizards provide direction for all machine functions, utilities and error recovery.

MPM 125. It's no longer necessary to sacrifice performance for price.

Then MPM 125 offers advanced, patented technology, high reliability, best in class accuracy, and operational simplicity in a package that sets the standard for value leadership in automated stencil printing.

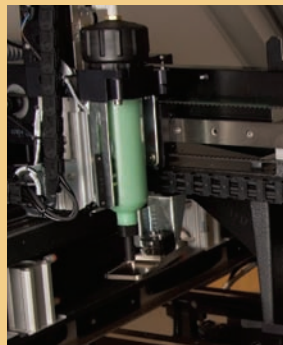
## MPM 125 : Affordable Performance

Best in class performance is achieved through best in class technology. The MPM 125 includes all the features and subsystems needed to provide high yields with today's toughest ultra-fine pitch components and lead-free printing requirements. As tomorrow's challenges unfold, MPM 125's performance will continue to prove its unparalleled value.



### Stencil Cleaner

This paper over plenum design, with venturi vacuum, patented roller solvent bar delivery system, and full software control, provides precise wet-dry wipe transition and exceptional cleaning results.

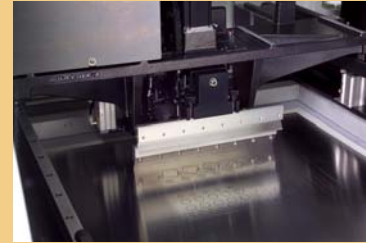


### Paste Dispenser

Industry-standard sealed cartridges release precise amounts of solder paste, adhesive, flux, encapsulants, or ink as a clean bead across the stencil. Offers operator friendly, programmable deposition volumes, frequency and placement.

### Programmable Squeegee

Independent, direct motor-driven lead screws for front/rear axes and an integrated compliance routine ensure accurate application of desired force, regardless of variations in squeegee type, length or thickness.



### CANopen Architecture

Rapid signal communication for fast motion control is facilitated in a true multi-tasking environment to maximize throughput and minimize the number of wires and cables.

### Benchmark Software

Designed for ease of use, process flexibility and control, Benchmark features an intuitive interface and instructional wizards to assist with operational tasks. Step-by-step guides and templates facilitate rapid set-up and changeover.

**WORLD HEADQUARTERS**  
 16 Forge Park, Franklin  
 MA 02038, USA  
 Tel: +1 (508) 520-0083  
 Fax: +1 (508) 520-2288

www.speedlinetech.com

**MANUFACTURING AND CUSTOMER SUPPORT FACILITIES**

**ACCEL/ELECTROVERT**  
 1629 Old South 5  
 Camdenton, MO 65020, USA  
 Tel: +1 (573) 346-3341  
 Fax: +1 (573) 346-5554

**CAMALOT/MPM**  
 16 Forge Park, Franklin  
 MA 02038, USA  
 Tel: +1 (508) 520-0083  
 Fax: +1 (508) 520-2288

**SALES AND CUSTOMER SUPPORT OFFICES MEXICO**

Speedline Technologies Mexico  
 Carretera Base Aerea No. 5850,  
 Km,21, Edificio No. 11,  
 Zapopan, Jalisco MX 45100  
 Toll Free Tel: +52 (2) 800 718-1614  
 Tel: +52 (33) 33-65-6511  
 Fax: +52 (33) 38-18-9019

**EUROPE**  
 Speedline Technologies GmbH  
 Im Gefierth 14, D-63303 Dreieich,  
 Germany  
 Tel: +49 (0) 6103-8320  
 Fax: +49 (0) 6103-832-299

**ASIA/PACIFIC**  
 Speedline Technologies Asia Pte Ltd  
 132 Joo Seng Road,  
 #03-01 Uniplus Building  
 Singapore 368358  
 Tel: +65 6286-6635  
 Fax: +65 6289-9411

© 2011 Speedline Technologies  
 All rights reserved. Printed in Singapore.  
 Covered by patents rights issued and/or pending

Speedline, Accel, Camalot, Electrovert, MPM, MPM 125, Gel-Flex and Protect are trademarks of Speedline Technologies or its subsidiaries and affiliated companies. Windows is a registered trademark of Microsoft Corporation. All other brands may be trademarks of their respective holders.

05/08ver - .03

**MPM 125 SPECIFICATIONS**

**BOARD HANDLING**

Maximum Board Size (X x Y)	609.6 mm x 508 mm (24" x 20")
Minimum Board Size (X x Y)	50.8 mm x 50.8 mm (2" x 2")
Board Thickness	0.2mm (0.008") to 5.0mm (0.20"), up to 6.0 mm (0.24") without top clamp foils
Maximum Board Weight	4.5 kg (9.92 lbs)
Board Edge Clearance	3.0mm (0.118")
Underside Clearance	12.7 mm (0.5") standard Configurable for 25.4mm (1.0")
Board Hold-Down	Fixed top clamps, centermost vacuum
Board Support Methods	Magnetic pins Optional Gel-Flex, vacuum pins, support blocks, or Grid-Lok

**PRINT PARAMETERS**

Maximum Print Area (X x Y)	609.6 mm x 508 mm (24" x 20")
Print Gap (Snap-off)	0 mm to 6.35 mm (0" to 0.25")
Print Speed	Up to 305 mm/sec (12.0"/sec)
Print Force	0 to 20 kg (0 lb to 44 lbs)
Stencil Frame Size	737 mm x 737 mm (29" x 29"), Adapters available for smaller sizes

**VISION**

Vision Field-of-View (FOV)	10.6 mm x 8.0 mm (0.417" x 0.315")
Fiducial Types	Standard shape fiducials (see SMEMA standards), pad/aperture
Camera System	Single digital camera - patented look up/down vision

**PERFORMANCE**

Total System Alignment Accuracy and Repeatability	±12.5 microns (±0.0005") at 6 sigma, Cpk of greater than or equal to 2.0*
Qualification is performed using production environment process variables; print speed, table lift and camera movement are included in the capability figure.	
Cycle Time	13 seconds standard

**FACILITIES**

Power Requirements	200 to 240 VAC (±10%) single phase @ 50/60Hz, 15 A
Air Supply Requirements	100 psi at 4 cfm (standard run mode) to 18 cfm (vacuum wipe) (6.89 bar @ 1.9 L/s to 8.5L/s), 12.7 mm (0.5") diameter line
Height (excluding light tower)	1638.4 mm (64.5") at 940 mm (37.0") transport height
Machine Depth	1593.1 mm (62.72")
Machine Width	1202.7 mm (47.35")
Minimum Front Clearance	508 mm (20.0")
Minimum Rear Clearance	508 mm (20.0")
Machine Weight	816.5 kg (1800 lbs)
Crated Weight	1110 kg (2447 lbs)

\* The higher the Cpk, the lower the variability with respect to the process specification limits. In a process qualified as a 6 sigma process (i.e., one that allows plus or minus 6 standard deviations within the specification limits), the Cpk is greater than or equal to 2.0.

**ABOUT SPEEDLINE TECHNOLOGIES**

Speedline Technologies is the global leader in process knowledge and expertise for the PCB assembly and semiconductor industries. Based in Franklin, Massachusetts, U.S.A., the company markets five best-in-class brands – Accel microelectronics cleaning equipment; Camalot dispensing systems; Electrovert wave soldering, reflow soldering, and cleaning equipment; MPM stencil and screen printing systems; and PROTECT global services, support, and training solutions. For more information, visit us at [www.speedlinetech.com](http://www.speedlinetech.com).

Speedline Technologies maintains an ongoing program of product improvement that may affect design and/or price. We reserve the right to make these changes without prior notice or liability.

